

THE CITY OF DONCASTER

Retail & Leisure



THE PERFECT LOCATION TO INVEST, LIVE & VISIT

Doncaster has much to be proud of and the varied attractions that make up the visitor economy area source of great civic pride.



Doncaster has earned a prominent reputation as a vibrant centre for shopping and leisure activities. It features a unique combination of well-known retail stores, shopping complexes, artisan shops and a bustling market.

Additionally, the city offers a wide array of attractions, including museums and galleries, castles, stately homes, theatres, cinemas, world-class sporting venues, the award winning Yorkshire Wildlife Park Resort, and of course is home to the oldest classic horse race, the St Leger Stakes.

Doncaster is also proud of its wide variety of restaurants, cafes and takeaways to complement the retail and visitor economy experience, taking you on a journey of discovery with foods from around the world. Combining a shopping trip with cultural and leisure activities is growing in popularity, and Doncaster is able to take advantage of this trend with its lively nightlife scene, great places to stay and outstanding cultural & leisure attractions.

DONCASTER: THE PLACE TO BE

From a multi-award-winning market to established retail outlets and vibrant visitor economy.



With millions of day-visitors, tourism is a significant contributor to Doncaster's economy with arts, events, sport, culture and heritage being key drivers of investment and growth.

Doncaster proudly hosts a spectrum of events all year round, from Armed Forces Day and Steampunk spectacles, to the vibrant celebrations of Doncaster Pride and live music events. This variety of activity helps contribute to strong footfall during every season.

The combination of Doncaster's strong retail tradition and thriving visitor economy provides outstanding opportunities for investors who want to play a part in shaping the development of Doncaster's retail and leisure offer.

OUTSTANDING CONNECTIVITY

The City of Doncaster's multi-modal transport connectivity offers excellent access to major conurbations, coastal ports and other parts of the UK and beyond, linking east to west and north to south.



Road

At the heart of the UK's motorway network with superb connections to the A1, M18 and M180, with links to the M1 and M62; over 6 million people live within a 45-minute drive of Doncaster.

Air

The City of Doncaster Council has signed a 125-year lease to take over the former Doncaster Sheffield Airport (DSA). It has been confirmed Munich Airport International will provide operational and management services to Doncaster Sheffield Airport, with flights set to resume in 2026.

Sea

Doncaster is located just 50 minutes to and from Humber Ports, the UK's largest port complex.

In addition, Doncaster has direct rail connections to all major UK ports with facilities designed to handle a wide variety of cargo.

Rail

- Fantastic connectivity to and from all major UK cities
- 104 UK rail stations directly served from Doncaster
- An average of 67 trains travel every day to and from London, with the journey taking as little as 87 minutes.

Rail passenger journey times to Doncaster

York	20 mins
Sheffield	22 mins
Leeds	30 mins
Manchester	80 mins
Newcastle	83 mins
London Kings Cross	87 mins
Birmingham	88 mins
Edinburgh	178 mins

Drive times to Doncaster

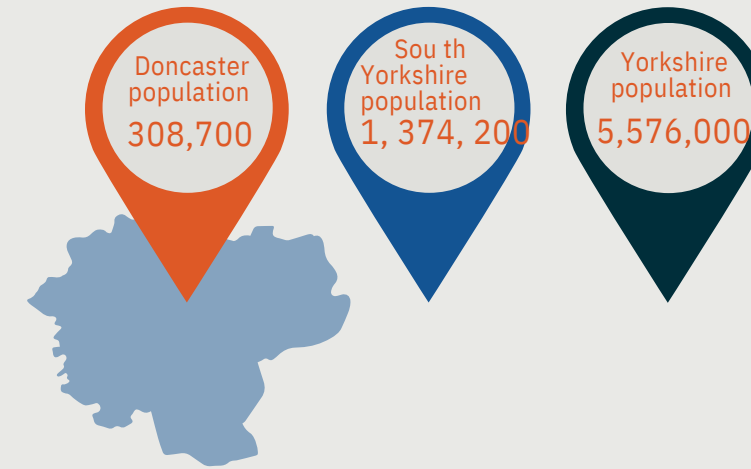
Sheffield	40 mins
Leeds	45 mins
York	1hr
Manchester	1hr 30 mins
Birmingham	1hr 45 mins
Newcastle	2hrs 30 mins
London	3hrs 45 mins
Edinburgh	4hrs 45 mins

POPULATION

Doncaster is the second largest settlement in South Yorkshire; the 15th largest in terms of population in the UK (outside of London).

Doncaster has a population of 308,700 living within the City boundary. Yorkshire & Humber has a population of 5,482,500.

Population Size



A great place to live...

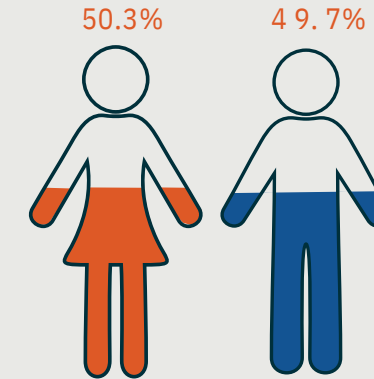


House prices in Doncaster represent excellent value for money and deliver a great return on investment when comparing like for like with other areas in the UK.

Location and Catchment

- Doncaster continues to achieve record breaking investment levels of over £525m in the last 3 years (2020-23) creating almost 4,000 jobs
- Better than the national average for housing affordability: ratio of 5.87 against a national average of 9.82
- 78.4% of working age population are economically active

Gender Distribution



City of Doncaster

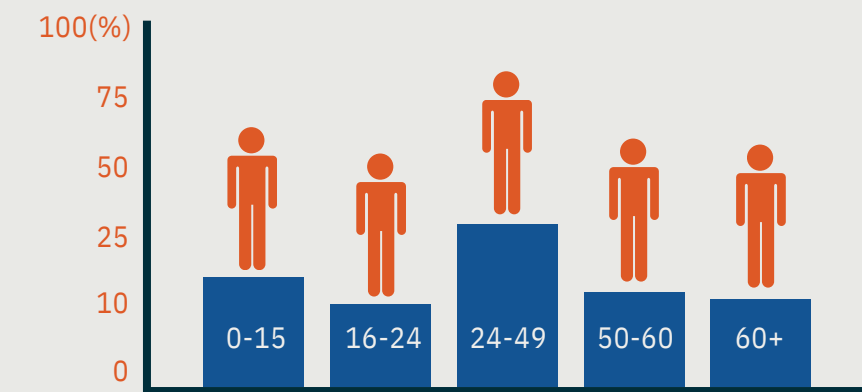
Doncaster is the largest metropolitan borough with a population larger than cities such as:

- Newcastle
- Peterborough
- Lincoln
- Hull

219 square miles



Age Group Distribution



LOCATION & CONNECTIVITY

There are many reasons why businesses invest in Doncaster. Take a look at some of our four key features...



The City Centre records footfall of over 13 million annually



Frenchgate is a two storey shopping centre comprising more than 800,000 sq.ft. with over 120 retailers



Doncaster has developed a well-earned reputation as a shopping destination, with its unique mix of high street stores, indoor shopping centre, artisan shops, market stalls and out of town retail parks



>6,500 car parking spaces across the City Centre



Transport Interchange welcomes 20,000 commuters daily



A thriving bar and restaurant zone, bustling with cuisine from around the world

BUSTLING MARKETS

Revitalising our City Centre through a dynamic transformation of retail, leisure and cultural attractions...



From a multi award-winning market to established retail outlets, Doncaster continues to be a strong retail destination



The Grade II listed Wool Market building has been repurposed as a food destination along with Doncaster's famous fish & meat market

The superbly refurbished Corn Exchange is now a high end retail destination, offering a versatile space suitable for a wide range of events, from pop up markets to live music... and much more



A PLACE OF DISCOVERY

With an array of exciting tourist attractions...

Day visitors are worth £186 million to the local economy

Home to our ever popular Yorkshire Wildlife Park Resort, Cusworth Hall and Doncaster Racecourse... Doncaster is a hotspot for 9.6m tourists every year



The St Leger Festival attracts around 50,000 visitors over 4 days



KEY SHOPPING DESTINATIONS

Where timeless traditions meet warm welcomes.



YORKSHIRE CHARM

Catering to a wide range of preferences.



CIVIC & CULTURAL QUARTER

Over a period of ten years, Doncaster has seen the development of the Civic and Cultural Quarter which is now proudly home to the City of Doncaster Council's Civic Offices, Cast Theatre, Danum Gallery, Library and Museum (DGLAM), Savoy Cinema and Mayfair Pub and Kitchen, Little Dessert Shop & Mother Hubbard's.



ALL ABOUT CULTURE

DGLAM opened its doors in 2021, proudly featuring the original façade of the historic Doncaster Girls High School. Its vast collection of artefacts reveal the story of Doncaster's past alongside its Rail Heritage Centre, Library Art Gallery and cafe. This city centre jewel contributed to attracting over 170,000 visitors in the financial year 2023/24.

Cast theatre has made a significant impact on the quarter hosting local and national touring performances, with an estimated footfall of 125,000 last financial year. Neighbours.

Savoy Cinema attracts over 150,000 visitors per annum.

Sir Nigel Gresley Square accommodates up to 12,000 people at any one time and plays host to various outdoor events including the popular annual DN1 Live music festival.

A place to work, live & enjoy

Named after the legendary locomotive engineer Sir Nigel Gresley who designed the creation of world famous locomotives Mallard and Flying Scotsman in Doncaster, Sir Nigel Gresley Square was designed to be an architecturally appealing square featuring quality seating, designer lighting and water fountains.

Central to the square is a stunning eight metre high sculpture, called Danum, designed by landscape architects Whitelaw Turkington.

In 2020, a 10 metre wide stone frieze from the former Doncaster Gaumont Cinema was relocated to the Square.

REGENERATION

CCQ

The Savoy cinema and restaurant complex, located in the Civic & Cultural Quarter, features a six-screen cinema and five restaurant units, offering a modern entertainment experience.

Mayfair Pub, Little Dessert Shop and Mother Hubbard's have successfully opened their doors here.

Two units remain available for occupation.



Copley House

The former Council office known as Copley House is located opposite Sir Nigel Gresley Square. Plans include ground floor retail, apartments and office space.

Renovation plans will see significant improvements throughout the entire Civic and Cultural Quarter area.



SO MUCH TO SEE AND DO

Doncaster is the newest city in the North of England offering first class amenities, surrounded by open free spaces and beautiful countryside to explore.

Doncaster has a lot to be proud of, from its racing calendar including the classic St Leger Festival, its rich railway heritage and wealth of Georgian and Regency architecture through to the UK's No.1 walk through Wildlife Park Adventure.



Scan the QR code to explore our latest Visitor Guide and discover Doncaster, your way! If you are planning a team building day, searching for the best restaurants and cafes locally or looking to book hotel accommodation then our guide has everything you need.



SUPPORT FOR YOUR BUSINESS

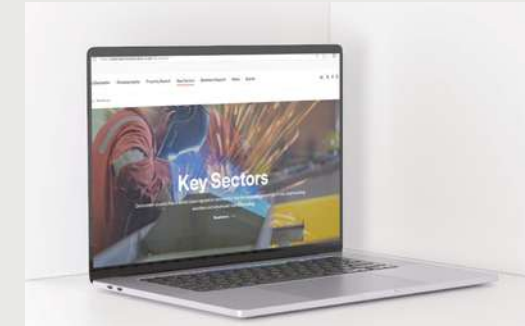
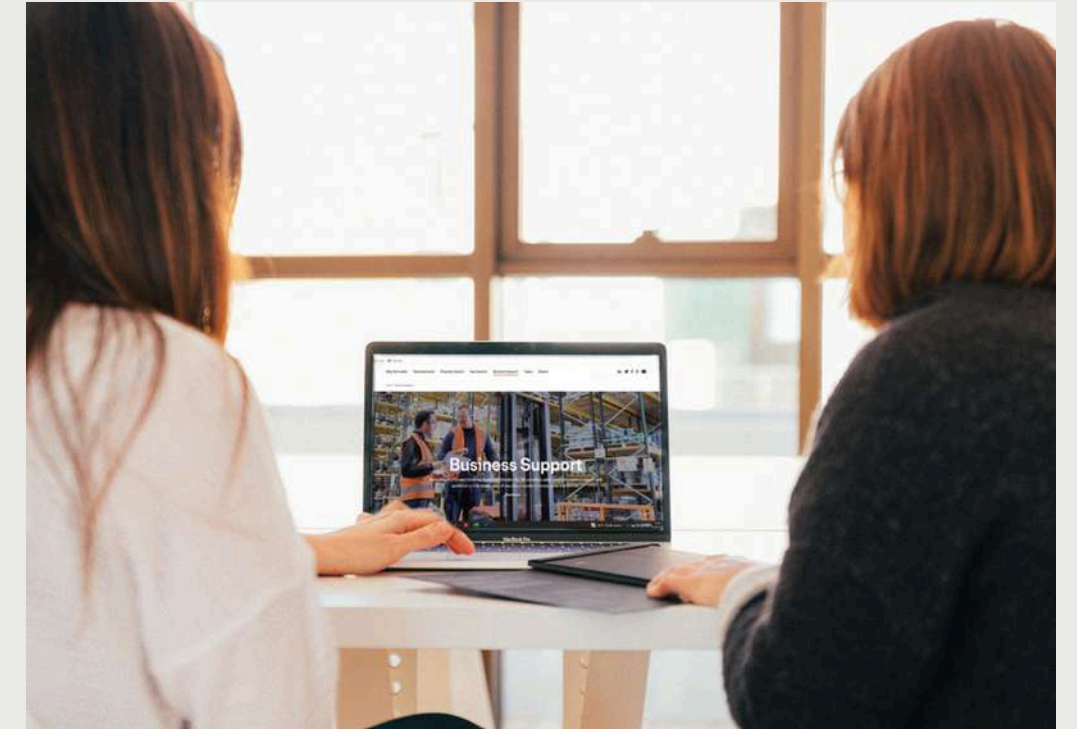
Our experienced Economic Development investment team can support your business whatever stage you're at. We offer free, confidential, high quality business support and information tailored to your individual business needs. The team are on hand to help find the right business solutions for you.

Below is a comprehensive overview (but not limited to) the services we provide:

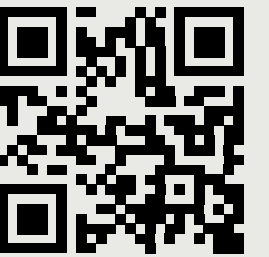
-  Land & Property Search
-  Business & Growth Strategy
-  Local Supply Chain Assistance
-  Innovations & Solutions
-  Frameworks & Accreditations
-  Access to Finance including Local & National Grant Funding
-  HR Recruitment & Skills
-  Sector Specific Forums & Events

Business Doncaster is the Economic Development arm of the City of Doncaster Council, dedicated to providing support and information to local businesses and those looking to invest, locate and grow in Doncaster.

Whether you are a new start up or an established business, we can help your business thrive, grow and achieve success.



For further information please scan the QR code to visit our sector web page here:



For further information please contact:

 **01302 735555**

 **info@businessdoncaster.com**

City of Doncaster
The place to invest, grow and thrive

City of Doncaster Council,
Civic Office, Doncaster, DN1 3BU

businessdoncaster.co.uk



All statistics & information contained within
this document are accurate as of June 2025.



**City of
Doncaster
Council**